



DESIGN AWARD

HOUSING

# Sky Vista @ Bukit Batok

## Project Overview

Just a few minutes' walk from the Bukit Batok Town Centre, Sky Vista @ Bukit Batok is located in a small, irregular-shaped site within a cluster of older HDB blocks.

The project cleverly optimises this site with 257 2- and 3-room residential units, facilities and amenities, while providing sheltered links to the existing estate. The residential towers have been designed to assimilate into the neighbourhood, while still standing out as a new landmark in the area.

To overcome the challenge of a small site, Sky Vista's multi-storey car park (MSCP) is used as a roof garden, offering recreational space to the residents. The 2 residential blocks are then linked to it through a network of sky bridges to bring greenery closer to their doorstep.



Crisp and refined details are applied onto the secondary structures such as the drop-off porch and precinct pavilion



At the 1<sup>st</sup> storey, community living rooms are designed for social encounters between residents



The precinct pavilion is designed with clean modern lines and incorporates key design elements from the residential blocks



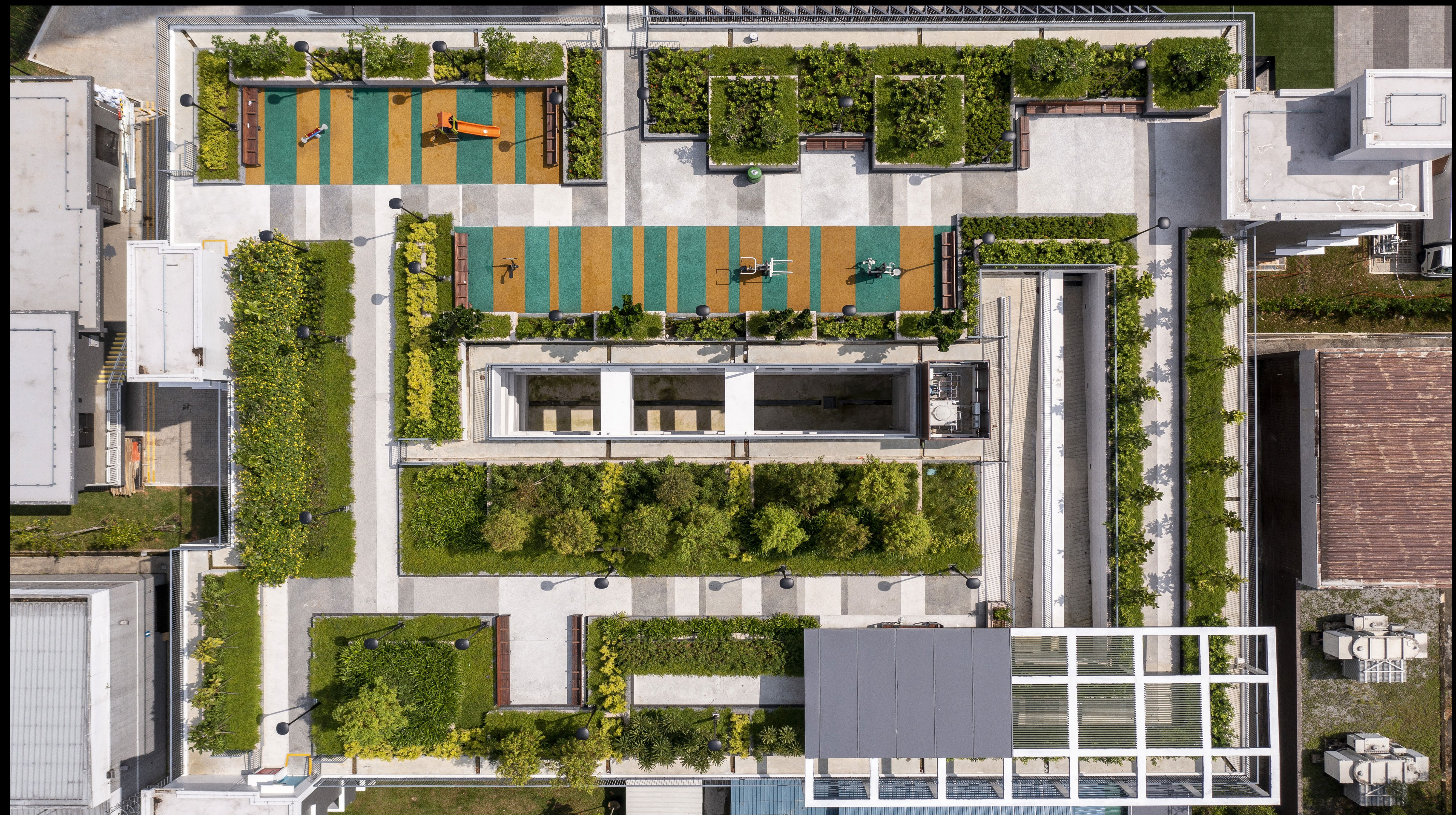
The new building is framed by the old blocks, and seamlessly connected to the existing surface car park



The slenderness and elegance of the blocks are accentuated by vertical elements in the façade design



The blocks function as an urban marker within the existing neighbourhood



The MSCP is linked to the residential blocks through a network of sky bridges



Vertical fins on the MSCP facade improve the utilitarian look of the car park



The MSCP roof is lushly planted to give residents a second layer of public green space to enjoy



Fully shaded and semi-shaded spaces give residents respite from the elements



The rooftop fitness corner atop the MSCP is equipped with multi-generational equipment for residents' recreational and fitness needs



Sheltered seating areas at the MSCP roof are provided for social gatherings